



# Los Carretes de Alemite



**Económica**  
**Standard Duty**  
**Heavy Duty**  
**Severe Duty**  
**Doble Poste/Brazo**  
**Alta Capacidad**  
**Ultra Capacidad**



# Standard Duty

## Cable-Eléctrico

Product #	Cord Size	Conductors	Cord Length	Volts	Ampere	Weight	Other Info.
7262-A	12 gauge	3	40'	125V	15 amp	15.4 lb.	Triple outlets
7262-B	16 gauge	3	50'	125V	10 amp	13 lb. (5.8 kg)	Fluorescent



## Aire-Agua

Product #	Inside Diameter	Length	Thread Size Inlet / Outlet	Reel Port Inlet Swivel/Outlet	Max. Pressure	Temp. Range
8051-1	5/16"	52'	1/4" NPT(f) / 1/4" NPT(m)	3/8" NPT(f) / 1/4" NPT(m)	218 psi	23° to 104° F



# Heavy Duty

La línea más popular para talleres



## Grease Reels

Product #	Max Pressure	Bare Reel	Delivery Hose Spec.	Weight	Connecting Hose Inlet	Delivery Hose Outlet
8078-A*	6,400 psi	7334-B	1/4" x 30' (317874-30)	56 lb.	3/8" NPTF(m)	1/4" NPTF(f)
8078-B*	6,400 psi	7334-B	1/4" x 50' (317874-50)	59 lb.	3/8" NPTF(m)	1/4" NPTF(f)
8078-T	6,400 psi	7334-B	3/8" x 50' (317870-50)	63 lb.	3/8" NPTF(m)	3/8" NPTF(f)

## Oil Reels

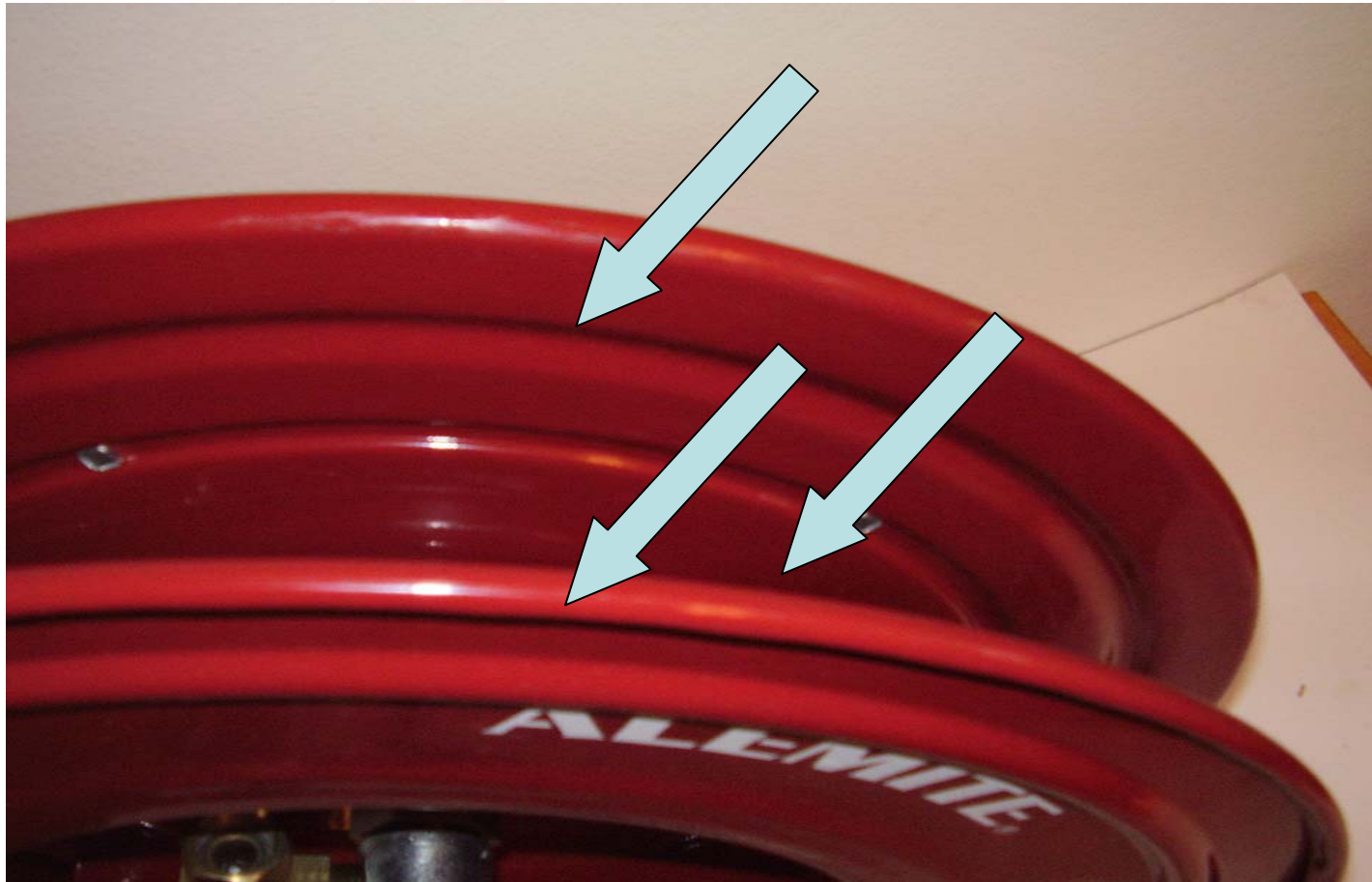
Product #	Pressure	Bare Reel	Delivery Hose Spec.	Weight	Connecting Hose Inlet	Delivery Hose Outlet
8078-C	1,500 psi	7335-B	1/2" x 30' (317813-30)	56 lb.	1/2" NPTF(m)	1/2" NPTF(m)
8078-D	1,500 psi	7335-B	1/2" x 50' (317813-50)	58 lb.	1/2" NPTF(m)	1/2" NPTF(m)

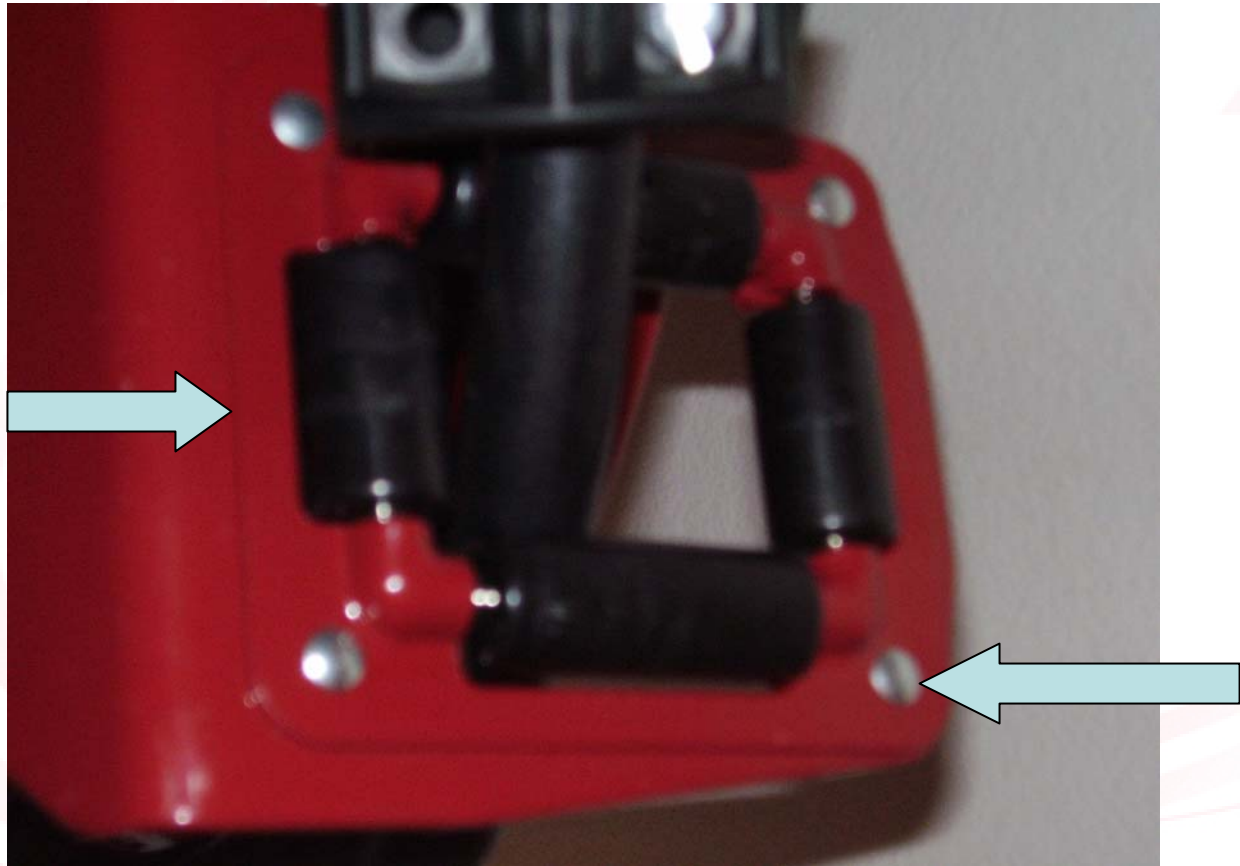
## Air/Water Reels

Product #	Max Pressure	Bare Reel	Delivery Hose Spec.	Air Coupler	Air Adapter	Connecting Hose	Weight	Connecting Hose Inlet	Delivery Hose Outlet
8078-E	200 psi	7336-B	3/8" x 30' (317803-30)	328030	328034	317811-2	51 lb.	1/2" NPTF(m)	1/4" NPTF(m)
8078-F	200 psi	7336-B	3/8" x 50' (317803-50)	328030	328034	317811-2	53 lb.	1/2" NPTF(m)	1/4" NPTF(m)
8078-M	200 psi	7336-B	1/2" x 50' (317811-50)	328031	328033	317811-2	61 lb.	1/2" NPTF(m)	1/2" NPTF(m)

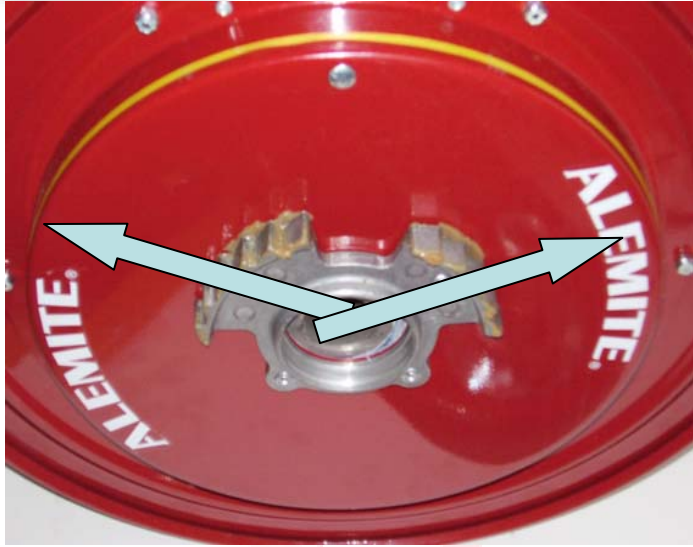


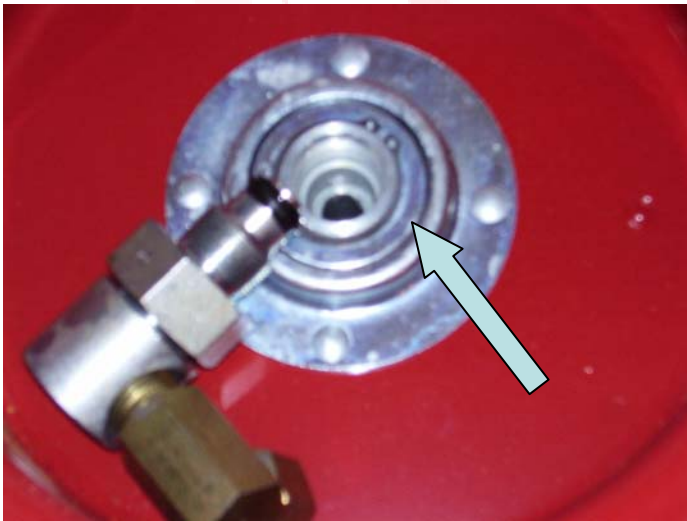
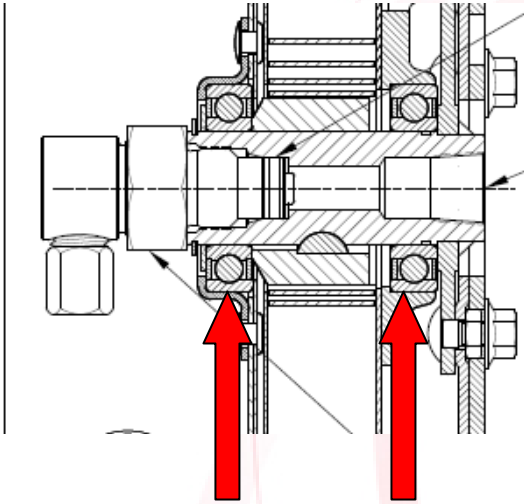
# Los Beneficios del diseño

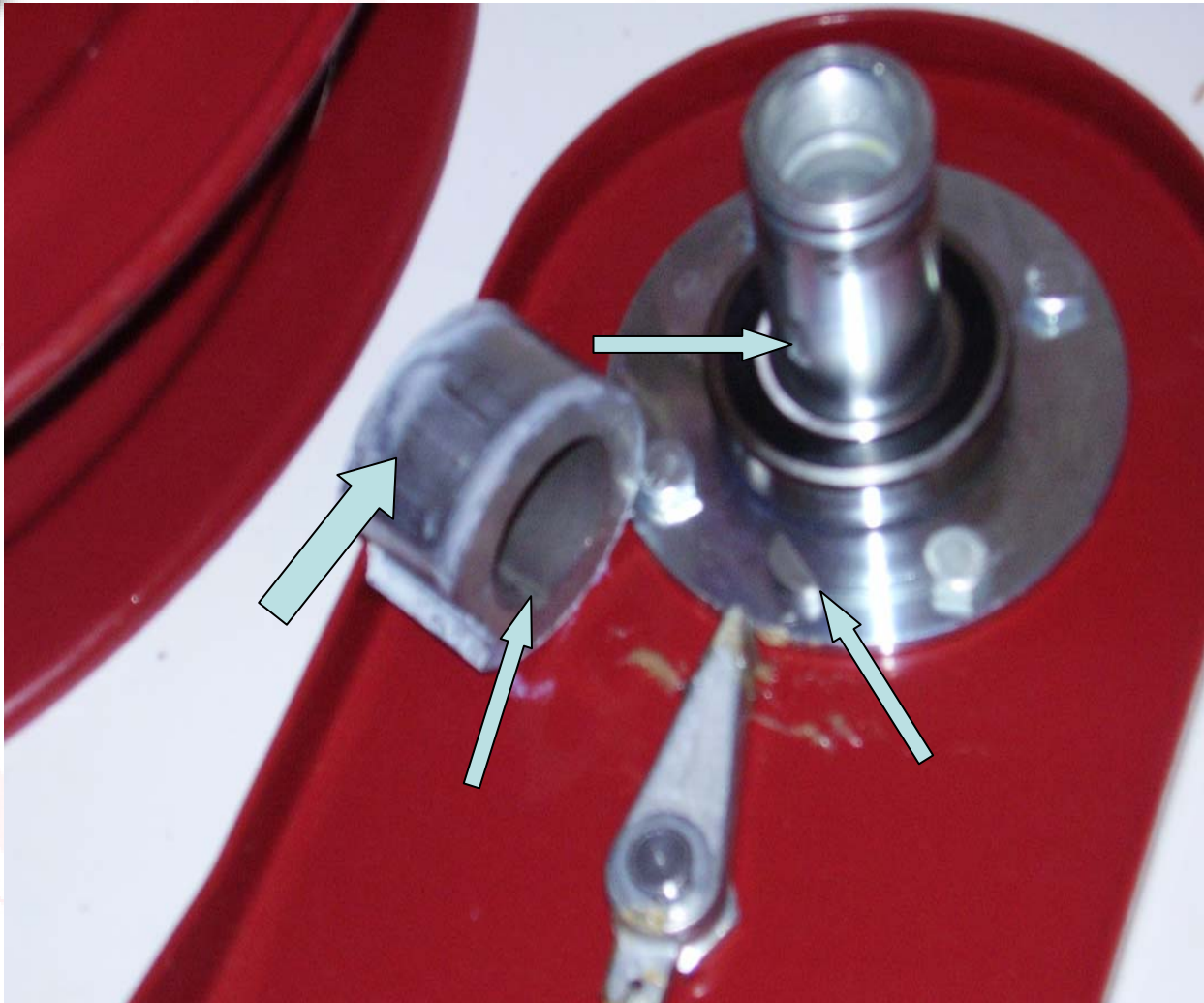


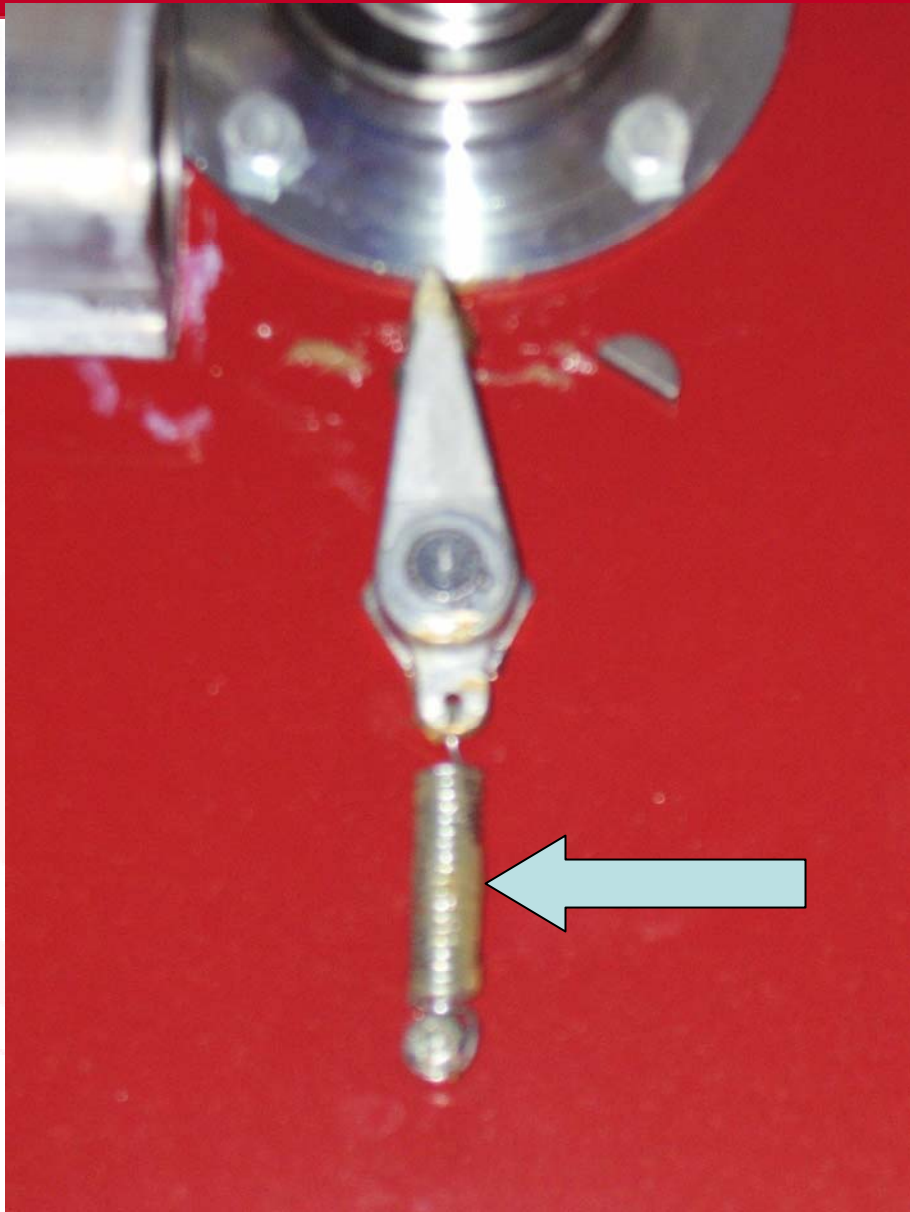






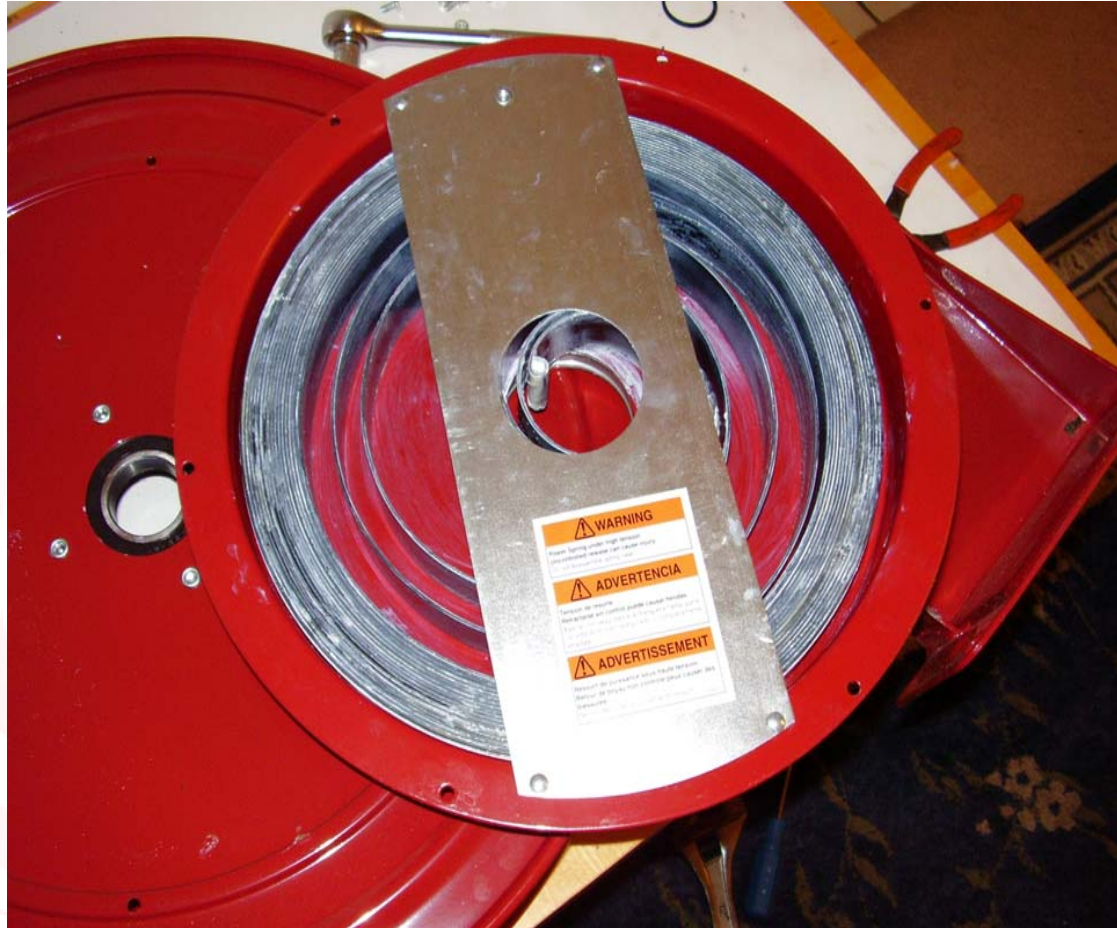








- **El color indica el tipo de resorte**
  - **Negro**
    - **Presión Alta (grasa)**
  - **Gris**
    - **Presión Baja (Aire/Aqua)**
    - **Presión Mediana (Aceite)**







## Severe Duty



- **Sellado y protegido para prevenir la entrada de agua y contaminantes**
- **Base de montaje de 1/4"**
- **Diseñado para usar en aplicaciones extremas**



# Severe Duty

## Air/Water Reels

Product #	Max Pressure	Bare Reel	Delivery Hose Spec.	Air Coupler	Air Adapter	Connecting Hose	Weight	Connecting Hose Inlet	Delivery Hose Outlet
8078-R	200 psi	7336-C	3/8" x 30' (317803-30)	328030	328034	317811-2	53 lb.	1/2" NPTF(m)	1/4" NPTF(m)
8078-J	200 psi	7336-C	3/8" x 50' (317803-50)	328030	328034	317811-2	55 lb.	1/2" NPTF(m)	1/4" NPTF(m)

## Fuel Reel

Product #	Pressure	Bare Reel	Delivery Hose Spec.	Connecting Hose	Weight	Connecting Hose Inlet	Delivery Hose Outlet
8078-K	300 psi	7337-C	3/4" x 30' (317868-30)	317868-2	71 lb.	3/4" NPTF(m)	3/4" NPTF(m)

## Twin Hose Reel

Product #	Pressure	Bare Reel	Delivery Hose Spec.	Connecting Hose	Weight	Connecting Hose Inlet	Delivery Hose Outlet
8078-S	3000 psi	7339	3/8" x 30' (340326-30)	317882-2	67 lb.	3/8" NPSM(f)	3/8" NPTF(m)

## Oil Reels

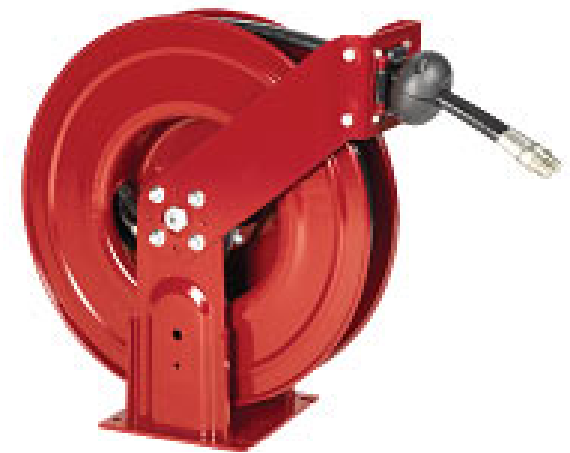
Product #	Pressure	Bare Reel	Delivery Hose Spec.	Connecting Hose	Weight	Connecting Hose Inlet	Delivery Hose Outlet
8078-P	1,500 psi	7335-C	1/2" x 30' (317813-30)	317813-2	58 lb.	1/2" NPTF(m)	1/2" NPTF(m)
8078-H	1,500 psi	7335-C	1/2" x 50' (317813-50)	317813-2	60 lb.	1/2" NPTF(m)	1/2" NPTF(m)

## Grease Reels

Product #	Pressure	Bare Reel	Delivery Hose Spec.	Connecting Hose	Weight	Connecting Hose Inlet	Delivery Hose Outlet
8078-N	6,000 psi	7334-C	1/4" x 30' (317874-30)	317876-2	58 lb.	3/8" NPTF(m)	1/4" NPTF(f)
8078-G	6,000 psi	7334-C	1/4" x 50' (317874-50)	317876-2	61 lb.	3/8" NPTF(m)	1/4" NPTF(f)



# Carretes Doble-Brazo



Product #	Description	Bare Reel	Delivery Hose Spec.	Reel Inlet	Delivery Hose Outlet	Hose Stop	Pressure
8081-A	1/4" x 30' High Pressure Hose Reel Assembly	7370	317874-30	3/8" NPSM(m)	1/4" NPTF(f)	337437	6,500 psi
8081-B	1/4" x 50' High Pressure Hose Reel Assembly	7370	317874-50	3/8" NPSM(m)	1/4" NPTF(f)	337437	6,500 psi
8081-C	1/2" x 40' Medium Pressure Hose Reel Assembly	7371	317813-40	1/2" NPSM(m)	1/2" NPTF(m)	337437	1,800 psi
8081-D	1/2" x 50' Medium Pressure Hose Reel Assembly	7371	317813-50	1/2" NPSM(m)	1/2" NPTF(m)	337437	1,800 psi
8081-E	3/8" x 40' Low Pressure Hose Reel Assembly	7372	317803-40	1/2" NPSM(m)	1/4" NPFT(m)	337437	200 psi
8081-F	3/8" x 50' Low Pressure Hose Reel Assembly	7372	317803-50	1/2" NPSM(m)	1/4" NPTF(m)	337437	200 psi
8081-G	1/2" x 50' Low Pressure Hose Reel Assembly	7371	317811-50	1/2" NPSM(m)	1/2" NPTF(m)	337437	200 psi
8081-H	3/8" x 30' High Pressure Hose Reel Assembly (Twin Hose)	7374	340326-30	3/8" NPSM(m) (both inlets)	3/8" NPTF(m)	339389-3	3,000 psi
8081-J	3/8" x 50' High Pressure Hose Reel Assembly	7370	317870-50	3/8" NPTF(m)	1/4" NPTF(f)	337437	4,000 psi
8081-K	3/4" x 30' Low Pressure Fuel Reel Assembly	7373	317868-30	3/4" NPSM(m)	3/4" NPTF(m)	339389	200 psi



# Alta Capacidad



## Air/Water Reels

Product #	Pressure	Bare Reel	Delivery Hose Spec.	Weight	Reel Inlet	Delivery Hose Outlet
8080-C	300 psi	7341	1/2" x 80' (317811-80)	115 lb.	1/2" NPTF(f)	1/2" NPTF(m)
8080-D	300 psi	7341	1/2" x 100' (317811-100)	125 lb.	1/2" NPTF(f)	1/2" NPTF(m)

## Oil Reels

Product #	Pressure	Bare Reel	Delivery Hose Spec.	Weight	Reel Inlet	Delivery Hose Outlet
8080-B	1,500 psi	7341	1/2" x 80' (317813-80)	125 lb.	1/2" NPTF(f)	1/2" NPTF(m)
8080-H	1,500 psi	7341	1/2" x 100' (317813-100)	154 lb.	1/2" NPTF(f)	1/2" NPTF(m)

## Grease Reel

Product #	Pressure	Bare Reel	Delivery Hose Spec.	Weight	Reel Inlet	Delivery Hose Outlet
8080-A*	6,000 psi	7340	3/8" x 80' (317870-80)	120 lb.	3/8" NPTF(m)	1/4" NPTF(f)



## Fuel Reels

Product #	Pressure	Bare Reel	Delivery Hose Spec.	Weight	Reel Inlet	Delivery Hose Outlet
8080-E	1,000 psi	7342	3/4" x 50' (317868-50)	145 lb.	1" NPTF(f)	3/4" NPTF(f)
8080-F	1,000 psi	7342	3/4" x 70' (317868-70)	155 lb.	1" NPTF(f)	3/4" NPTF(f)
8080-G	1,000 psi	7342	1" x 50' (317869-50)	165 lb.	1" NPTF(f)	1" NPTF(f)
8080-J	150 psi	7342	1" x 50' (339634-50)	165 lb.	1" NPTF(f)	1" NPTF(f)

## Twin Hose Reels

Product #	Pressure	Bare Reel	Delivery Hose Spec.	Weight	Connecting Hose Inlet	Delivery Hose Outlet
8080-K	3,000 psi	7343	3/8" x 80' (340326-80)	165 lb.	3/8" NPSM(f)	3/8" NPSM(m)
8080-L	3,000 psi	7344	1/2" x 80' (340328-80)	180 lb.	1/2" NPSM(f)	1/2" NPTF(m)





# Extra-Alta Capacidad

- Capacidades desde:
  - ½" i.d. x 900ft (274m)
  - hacia
  - 2" i.d. x 140ft (43m)
- Retractable por:
  - Manual
  - Motor
    - Eléctrico
    - Hidráulico
    - Neumático



Shown with  
Optional Bevel Crank

Made in USA



# Serie 8110

## HOSE CAPACITY AND REEL DIMENSIONS

HOSE I.D.	in mm	1/2 13	3/4 19	1 25	HOSE CAPACITY AND REEL DIMENSIONS											
HOSE O.D.	in mm	7/8 22	1 9/32 33	1 9/16 40												
MODEL	HOSE LENGTH				EST. WEIGHT		A	B	C	D	E CRK	E ELC	F CRK	F ELC	G	H
8110-1916	ft m	200 61	100 30	50 15	70 LB 31 KG	in mm	21 533	16 406	11 1/4 286	21 533	19 533	19 533	26 660	29 737	22 1/2 572	13 330
8110-2314	ft m	315 96	150 46	100 30	74 LB 34 KG	in mm	20 508	14 356	11 1/4 286	21 533	23 584	23 584	24 610	27 686	24 1/2 622	13 330
8110-2318	ft m	485 148	240 73	150 46	78 LB 35 KG	in mm	24 610	18 457	11 1/4 286	21 533	23 584	23 584	28 711	31 787	24 1/2 622	13 330
8110-2324	ft m	625 191	300 91	200 61	84 LB 38 KG	in mm	30 762	24 610	11 1/4 286	21 533	23 584	23 584	34 864	37 940	24 1/2 622	13 330
8110-3116	ft m	900 274	400 122	300 91	80 LB 36 KG	in mm	22 559	16 406	11 1/4 286	24 610	31 787	31 787	26 660	29 737	32 1/2 826	17 432



# Serie 8120

## HOSE CAPACITY AND REEL DIMENSIONS

HOSE I.D.	in mm	1 25	1 1/4 32	1 3/8 35	1 1/2 38	HOSE CAPACITY AND REEL DIMENSIONS											
HOSE O.D.	in mm	1 9/16 40	1 13/16 46	2 51	2 1/16 52												
MODEL	HOSE LENGTH					EST. WEIGHT		A	B	C	D	E CRK	E ELC	F CRK	F ELC	G	H
8120-2512	ft m	95 29	85 26	55 17	50 15	89 LB 40 KG	in mm	18 457	12 305	11 1/4 286	21 533	25 635	25 635	22 559	25 635	26 1/2 673	14 356
8120-3112	ft m	210 64	155 47	115 35	105 32	92 LB 42 KG	in mm	18 457	12 305	11 1/4 286	24 610	31 787	31 787	22 559	25 635	32 1/2 826	17 432
8120-3116	ft m	305 93	205 62	155 47	150 46	96 LB 44 KG	in mm	22 559	16 406	11 1/4 286	24 610	31 787	31 787	26 660	29 737	32 1/2 826	17 432
8120-3120	ft m	365 111	275 84	200 61	190 58	100 LB 45 KG	in mm	26 660	20 508	11 1/4 286	24 610	31 787	31 787	30 762	33 838	32 1/2 826	17 432



# Serie 8130

## HOSE CAPACITY AND REEL DIMENSIONS

HOSE I.D.	in mm	1 1/2 13	2 51	HOSE CAPACITY AND REEL DIMENSIONS											
HOSE O.D.	in mm	2 1/16 52	2 9/16 65												
MODEL	HOSE LENGTH			EST. WEIGHT		A	B	C	D	E CRK	E ELC	F CRK	F ELC	G	H
8130-2520	ft m	65 20	55 17	124 LB 56 KG	in mm	26 660	20 508	15 381	21 533	25 635	25 635	30 762	33 838	26 1/2 673	14 356
8130-2532	ft m	115 35	90 27	136 LB 62 KG	in mm	38 965	32 813	15 381	21 533	25 635	25 635	42 1067	45 1143	26 1/2 673	14 356
8130-3916	ft m	225 69	140 43	182 LB 83 KG	in mm	22 559	16 406	15 381	24 610	39 991	39 991	26 660	29 737	40 1/2 1029	21 533



HOSE I.D.	in mm	1 1/2 38	2 51	HOSE CAPACITY AND REEL DIMENSIONS											
HOSE O.D.	in mm	2 1/16 52	2 9/16 65												
MODEL	HOSE LENGTH			EST. WEIGHT		A	B	C	D	E CRK	E ELC	F CRK	F ELC	G	H
8130-2520	ft m	65 20	55 17	124 LB 56 KG	in mm	26 660	20 508	15 381	21 533	25 635	25 635	30 762	33 838	26 1/2 673	14 356
8130-2532	ft m	115 35	90 27	136 LB 62 KG	in mm	38 965	32 813	15 381	21 533	25 635	25 635	42 1067	45 1143	26 1/2 673	14 356
8130-3916	ft m	225 69	140 43	182 LB 83 KG	in mm	22 559	16 406	15 381	24 610	39 991	39 991	26 660	29 737	40 1/2 1029	21 533

Series	Head Dia.	Drum Length	Drive Options		Thread Size-Inlet	Inlet Type	Thread Style	Fluid Path Material	Pressure	Inlet Style	Fluid Path Location/Direction	Color											
8130	25	16	EP	12v DC Explosion Proof Elec. Motor	20	2"	V	Victaulic	NP	NPT	A	Aluminum	LP	0-300	1	Straight	1	Left Hand Top Wind	M	Alemite Red			
	39	20	EA	115v AC Electric Explosion Proof Motor			M	Male In									2	90 Degree	2	Left Hand Bottom Wind	G	Grey	
			EJ	24v DC Electric Explosion Proof Motor															3	Right Hand Top Wind	B	Black	
				BC															Bevel Crank	4	Right Hand Bottom Wind	W	White
				A															Air Motor			S	Silver
				H															Hydraulic Motor				

2" female NPT Gooseneck Standard

**Part No. Example:**

**8130-2520EP-20VNPALP11M**

**8130** (Series 8130 Hose Reel)

**-25** (25" Head Dia.)

**20** (20" Drum Length)

**-20** (2" Thread Size)

**NP** (NPT Thread Style)

**LP** (0-600 PSI)

**1** (Left Hand Top Wind Fluid Path Location/Direction)

**EP** (12v DC Expl. Proof Electric Motor)

**V** (Victaulic Thread Type)

**A** (Aluminum Fluid Path)

**1** (Straight Inlet)

**M** (Color, Alemite Red)

**Additional Options Available:**

**Hose Guide, Chain Shroud, and Motor Controls**



# Puntos para acordarse

- Durante el ajuste de la tensión, el sistema tiene que estar presurizado y todos los componentes montados.
  - El peso del producto (Aceite, Grasa) puede cambiar la tensión requerida
  - El peso del medidor o válvula de control puede cambiar la tensión requerida.
  - La presión del producto puede cambiar la tensión requerida



# Puntos para acordarse

- Identificación de la Aplicación
  - Camiones de Servicio
    - **Vibración y Golpes**
    - **Lluvia**
    - **Agua del Mar**
    - **Tierra y polvo**
    - **Químicos y Detergentes**
    - **Luz Ultravioleta**
- La Corrosión es la falla #1 de los Carretes instalados en Camiones de Servicio